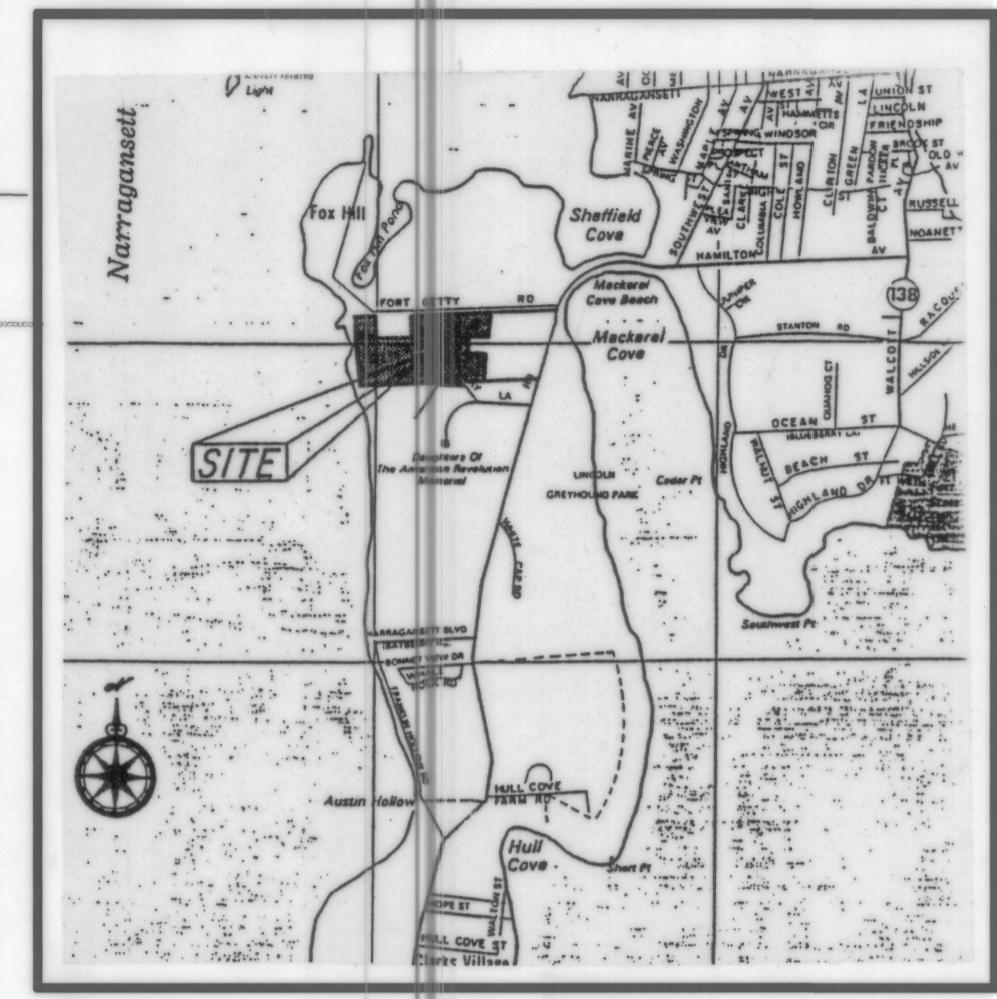
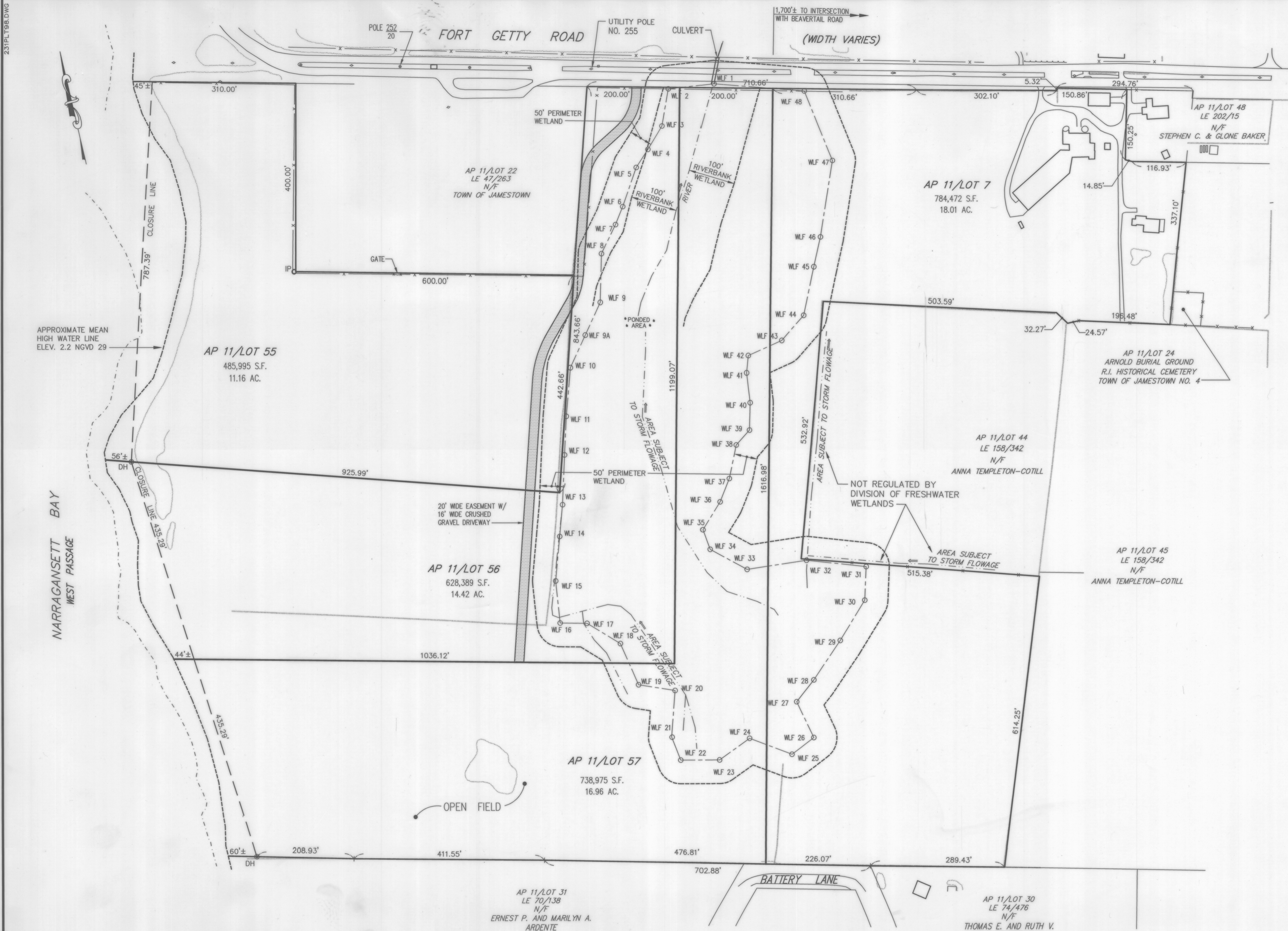


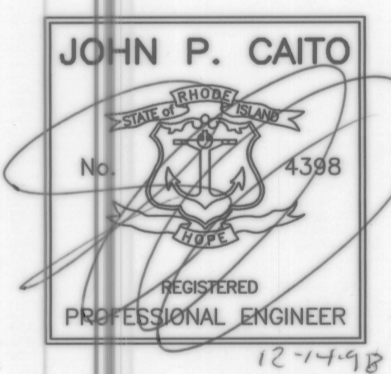
23/PL198.DWG



LOCATION MAP NOT TO SCALE

LEGEND:

- PROPERTY LINE
- - - PROPOSED LOT LINE
- AP 11/LOT 45 ASSESSOR'S PLAT/LOT
- LE 158/342 LAND EVIDENCE BOOK/PAGE
- DH DRILL HOLE
- IP IRON PIPE
- x x x FENCE
- STONE WALL
- - - SHORE LINE
- - - AREA SUBJECT TO STORM FLOW
- WLF-15 WETLAND AREA REVISED IN CONFORMANCE WITH R.I.D.E.M. LETTER DATED 10-14-96, R.I.D.E.M. FILE NO. 91-04150
- - - 50 FT. PERIMETER WETLAND



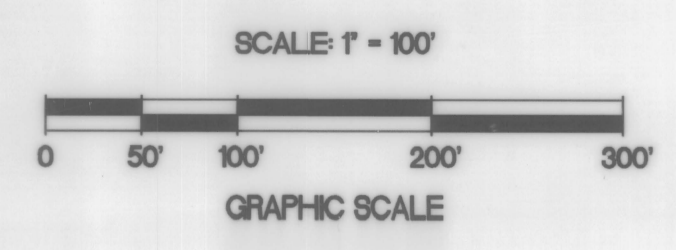
PLOT PLAN
BEAVER HEAD FARM
ASSESSOR'S PLAT 11, LOTS 7, 55, 56 and 57

SITUATED IN
JAMESTOWN, RHODE ISLAND

PREPARED FOR
ANNA TEMPLETON-COTILL

PREPARED BY
JOHN P. CAITO CORPORATION
CIVIL ENGINEERS • LAND PLANNERS
935 PHENIX AVENUE
CRANSTON, RHODE ISLAND 02921-1107
(401) 946-0300 FAX (401) 944-6009

- REFERENCE:
- 1) "SITE PLAN, BEAVER HEAD FARM, AP 11, LOTS 7, 55, 56 AND 57, SITUATED IN JAMESTOWN, RHODE ISLAND, PREPARED FOR ANNA TEMPLETON-COTILL, BY JOHN P. CAITO CORPORATION, SHEET 1 OF 1, SCALE: 1"=100', DATE: FEBRUARY, 1998." REVISED: JULY 24, 1998.
 - 2) PLAN ENTITLED "DIVISION OF LAND, BEAVER HEAD FARM, ASSESSOR'S PLAT 11, LOT 7; SITUATED IN JAMESTOWN, RI; PREPARED FOR ANNA TEMPLETON-COTILL; PREPARED BY JOHN P. CAITO CORPORATION; DATED DECEMBER, 1995"



Recorded for record in Jamestown, R.I.
on January 25, 1999 at 8:11 AM
3/20/99

DECEMBER 1998

JOHN P. CAITO CORPORATION